

**NEOMETRO™**



**Neometro is Melbourne's pre-eminent architectural development group, with a twenty five year track record of delivering bespoke architectural residences. Described in Wallpaper\* Magazine as 'exemplars of mixed-use development', Jeff Provan and James Tutton are dedicated to creating architectural buildings with a sense of place and belonging. Neometro have available properties in South Yarra, St Kilda and South Melbourne, with up-coming projects in Fitzroy and on the Mornington Peninsula.**

## CURRENT NEOMETRO PROJECTS

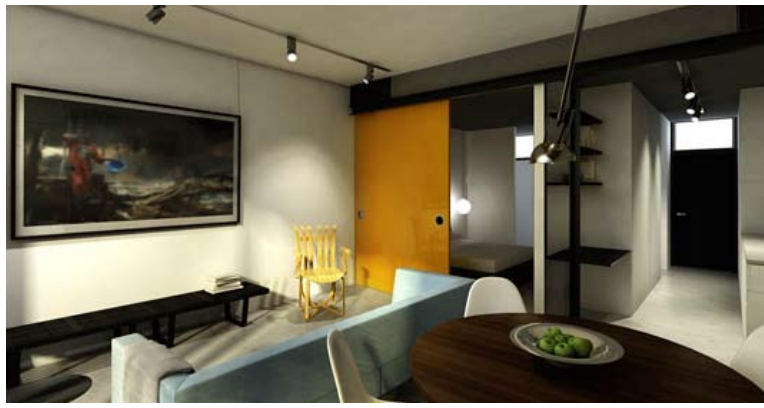
---

### HARPER LANE

[www.harperlane.com.au](http://www.harperlane.com.au)

The "turbo diesel Golf of apartments"  
Harper Lane offers architectural apartments  
at a competitive price point.

Located at 78 Inkerman Street St Kilda.

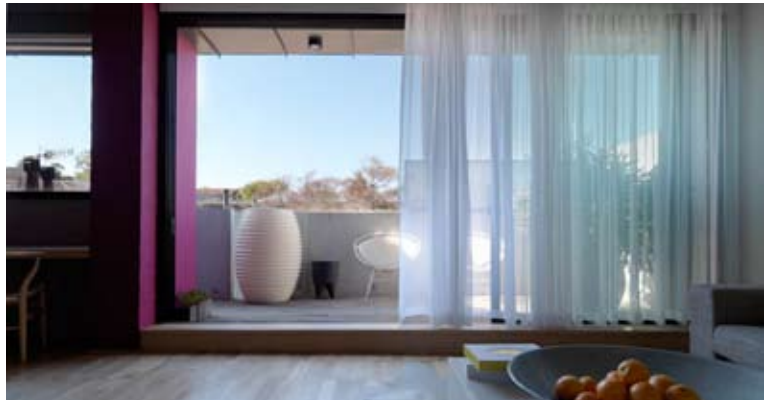


### BANK STREET

[www.bankst.com.au](http://www.bankst.com.au)

A small number of town residences  
located minutes from St Vincent's  
Place and Albert Park Village.

Located at the corner of Ferrars and  
Bank Streets in South Melbourne.

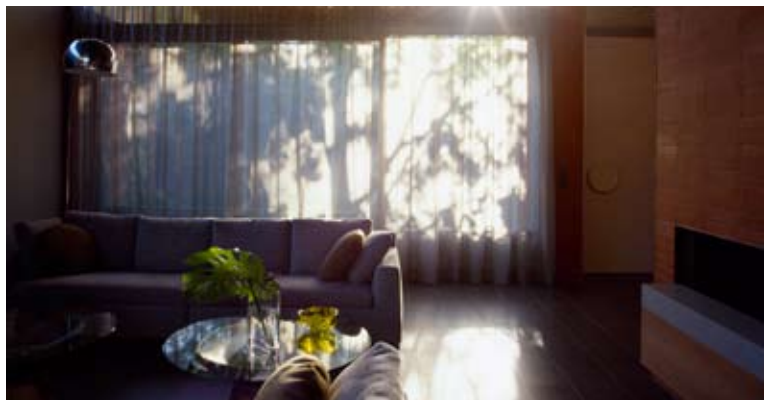


### AIRLIE BANK

[www.airliebank.com.au](http://www.airliebank.com.au)

Located in the Royal Botanic  
Garden's precinct of South Yarra,  
these apartments continue the  
architectural legacy of one of  
Melbourne's most inspired  
residential areas.

Located at Airlie Bank Lane,  
off Walsh Street in South Yarra.



## UP-COMING NEOMETRO PROJECTS:

---

### Rye Back Beach

Six large ocean access blocks within their own architectural precinct. These 5,000 square metre blocks directly about Bass Strait. Located at 21 Avon Road, Rye.

### South Yarra

A series of inner city residences positioned near the corner of Domain and Darling Streets, South Yarra. Located at 41 Darling Street, South Yarra.

### Fitzroy

Planned apartment development above one of Fitzroy's most iconic warehouse buildings. Moments from Gertrude Street and Smith Street's food and wine delights.

## PAST NEOMETRO PROJECTS:

---



10 Darling Street, South Yarra  
10 apartments, 2008



91 Wellington Street, St Kilda  
11 apartments/offices and cafe, 2006



53-59 Dow Street, South Melbourne  
7 apartments, 2005



36 Wynnstay Road, Prahran  
8 apartments, 2004



49 Wilson Street, South Yarra  
11 apartments/offices, 2004



Fina, 892 High Street, Armadale  
9 apartments and office, 2001



Luxe, 9-15 Inkerman Street, St Kilda  
1998

---

## NEOMETRO PROJECTS:

### LEGEND:

- |  |   |
|--|---|
| <ul style="list-style-type: none"> <li>1 10 Darling Street, South Yarra<br/>10 apartments, 2008</li> <li>2 91 Wellington Street, St Kilda<br/>11 apartments/offices and cafe, 2006</li> <li>3 53-59 Dow Street, South Melbourne<br/>7 apartments, 2005</li> <li>4 36 Wynnstay Road, Prahran<br/>8 apartments, 2004</li> <li>5 49 Wilson Street, South Yarra<br/>11 apartments/offices and office, 2004</li> <li>6 Fina, 892 High Street, Armadale<br/>9 apartments and office, 2001</li> </ul> | <ul style="list-style-type: none"> <li>7 Luxe, 9-15 Inkerman Street,<br/>St Kilda, 1998</li> <li>8 Harper Lane, 78 Inkerman Street,<br/>St Kilda, Current</li> <li>9 Bank Street, Cnr Ferrars &amp; Bank<br/>Streets, South Melbourne, Current</li> <li>10 Airlie Bank, Airlie Bank Lane,<br/>South Yarra, Current</li> <li>11 Fitzroy, Cnr Moor &amp; Smith Streets,<br/>Fitzroy, Upcoming</li> <li>12 41 Darling Street,<br/>South Yarra, Upcoming</li> </ul> |
|--|---|

